



Crabtree, Rohrbaugh & Associates

WYOMISSING AREA SCHOOL DISTRICT

CONSTRUCTION UPDATE

APRIL 20, 2022

WYOMISSING HILLS EC PHASING PLAN

CONFORMED SET

- PHASE 1.1** JULY 2021 - AUGUST 18, 2021 PARTIAL COMPLETION
- PHASE 1.2** LAST WEEK OF NOVEMBER 2021 SUBSTANTIAL COMPLETION
- PHASE 2.1** JULY 2021 - AUGUST 18, 2021 PARTIAL COMPLETION
- PHASE 2.2** JUNE 2022 - AUGUST 2022 SUBSTANTIAL COMPLETION
- PHASE 3** AUGUST 2021 - FEBRUARY 2022
- PHASE 4** MARCH 2022 - APRIL 2022
- PHASE 5** MAY 2022 - JUNE 2022
- PHASE 6** JUNE 2022 - AUGUST 2022
- PHASE 7** JUNE 2022 - SEPTEMBER 2022

SUBSTANTIAL COMPLETION 443 CALENDAR DAYS AFTER NTP DATE.
FINAL COMPLETION 504 CALENDAR DAYS AFTER NTP DATE.



WYOMISSING HILLS CONSTRUCTION SCHEDULE

Wyomissing Hills Elementary Center

- Aug 2021 – Early May 2022: New Classroom Additions
- Apr 2022 – End of May 2022: Early Phase Classrooms
- Summer 2022: Support Spaces (including Admin, Guidance, Music, Cafeteria/Kitchen)
- Aug 2022 – Oct 2022: Final Phase Classrooms

WYOMISSING HILLS CONSTRUCTION PHOTOS



WYOMISSING HILLS CONSTRUCTION PHOTOS



WYOMISSING HILLS CONSTRUCTION PHOTOS



WYOMISSING HILLS CONSTRUCTION PHOTOS



WYOMISSING HILLS EC PENDING CHANGE ORDERS

General Construction

- PCO 3 Deck replacement error \$7,528.70
- PCO 4 Revised step-footings due to unforeseen condition \$16,404.67
- PCO 7 Additional masonry pier at Kiln Room \$10,511.57
- PCO 8 New roof drain at exist. roof for improved drainage \$1,191.06
- PCO 9 New bulkhead in Art room to conceal exposed piping \$6,340.53

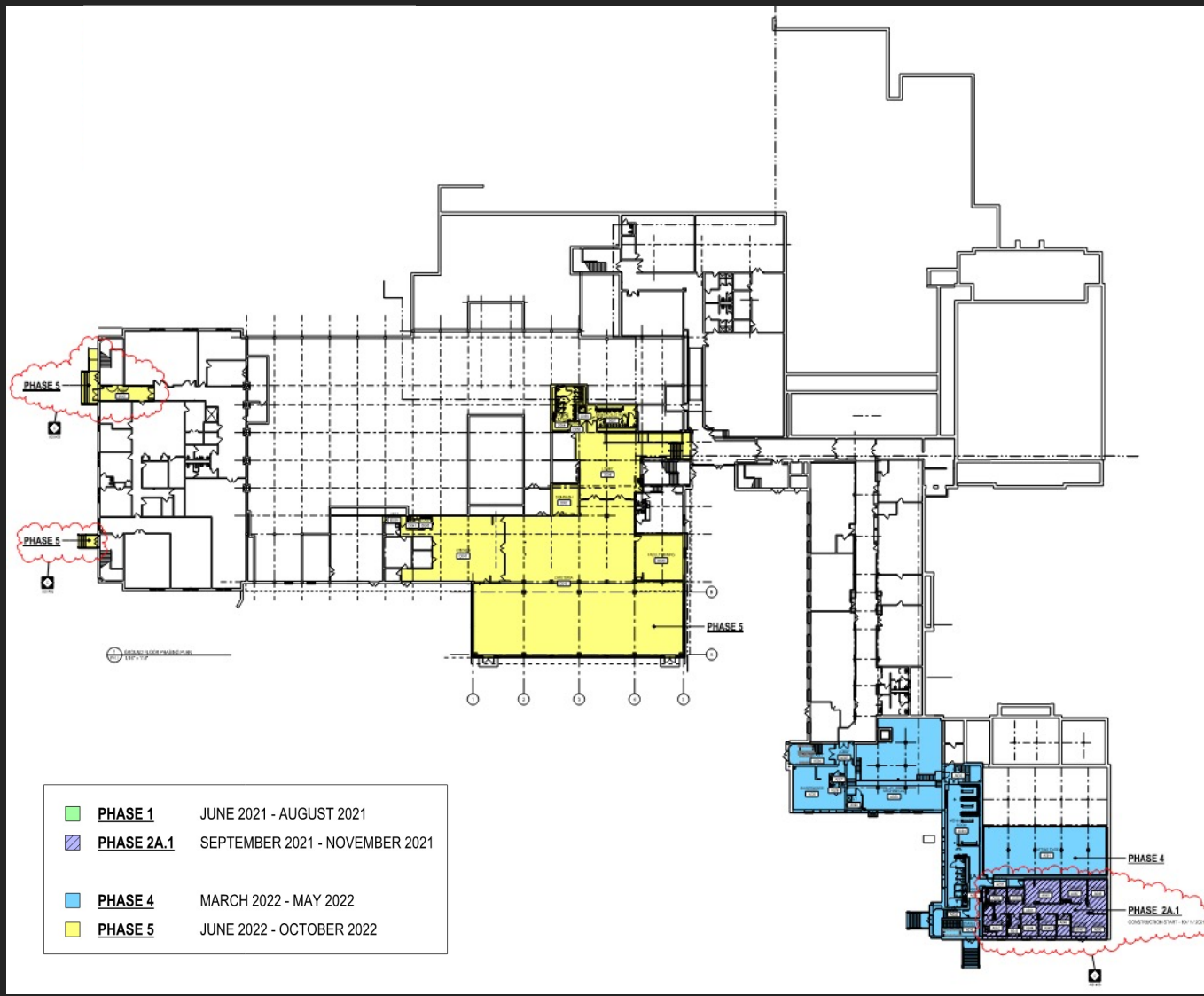
HVAC Construction

- PCO 5 Chilled water line relocation at new bearing wall \$6,485.00

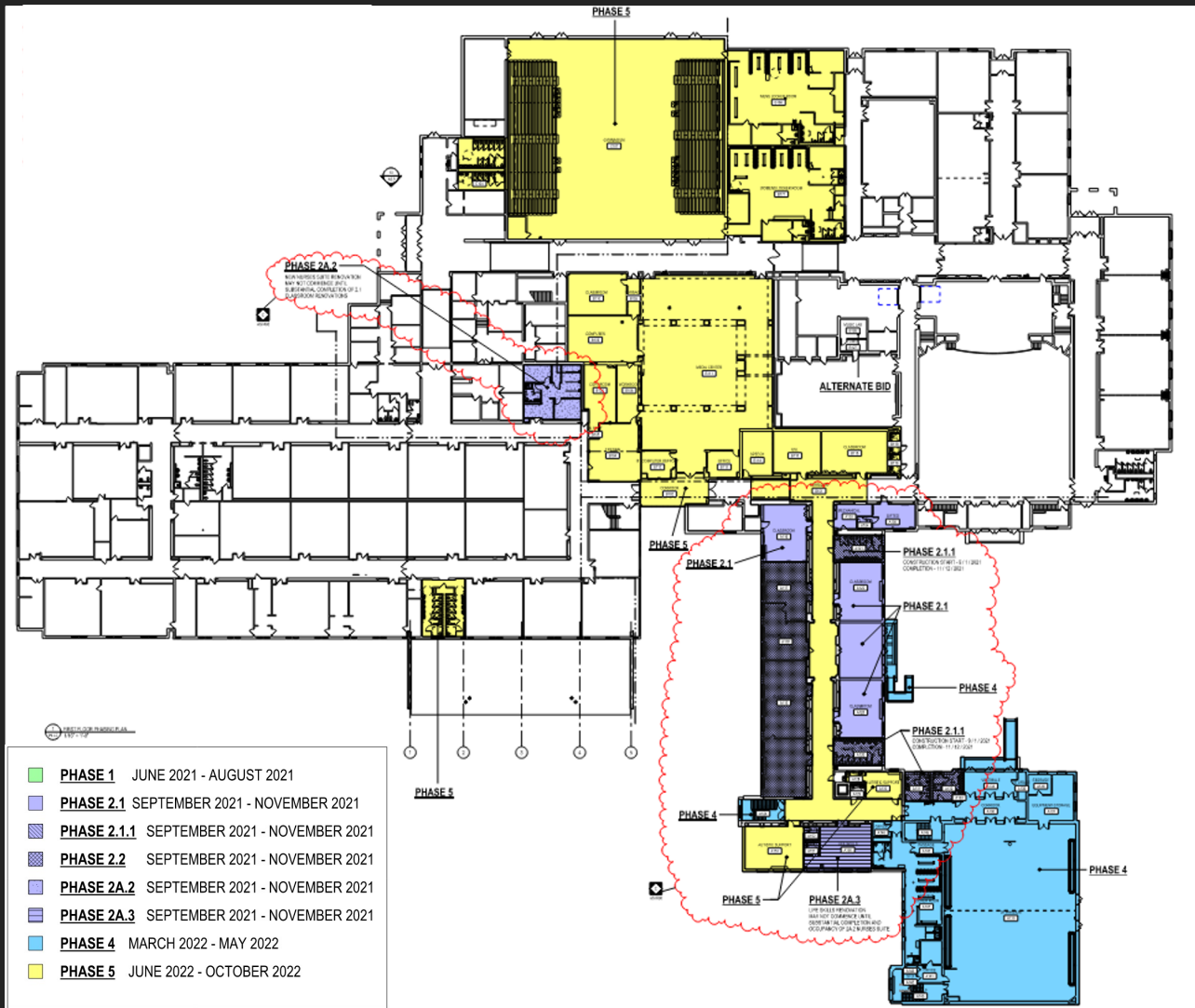
Plumbing Construction

- PCO 4 New sprinkler zone per NFPA for building area \$30,757.00
- PCO 5 New sprinkler system in basement to reduce demolition and patching of existing ceilings \$23,685.00

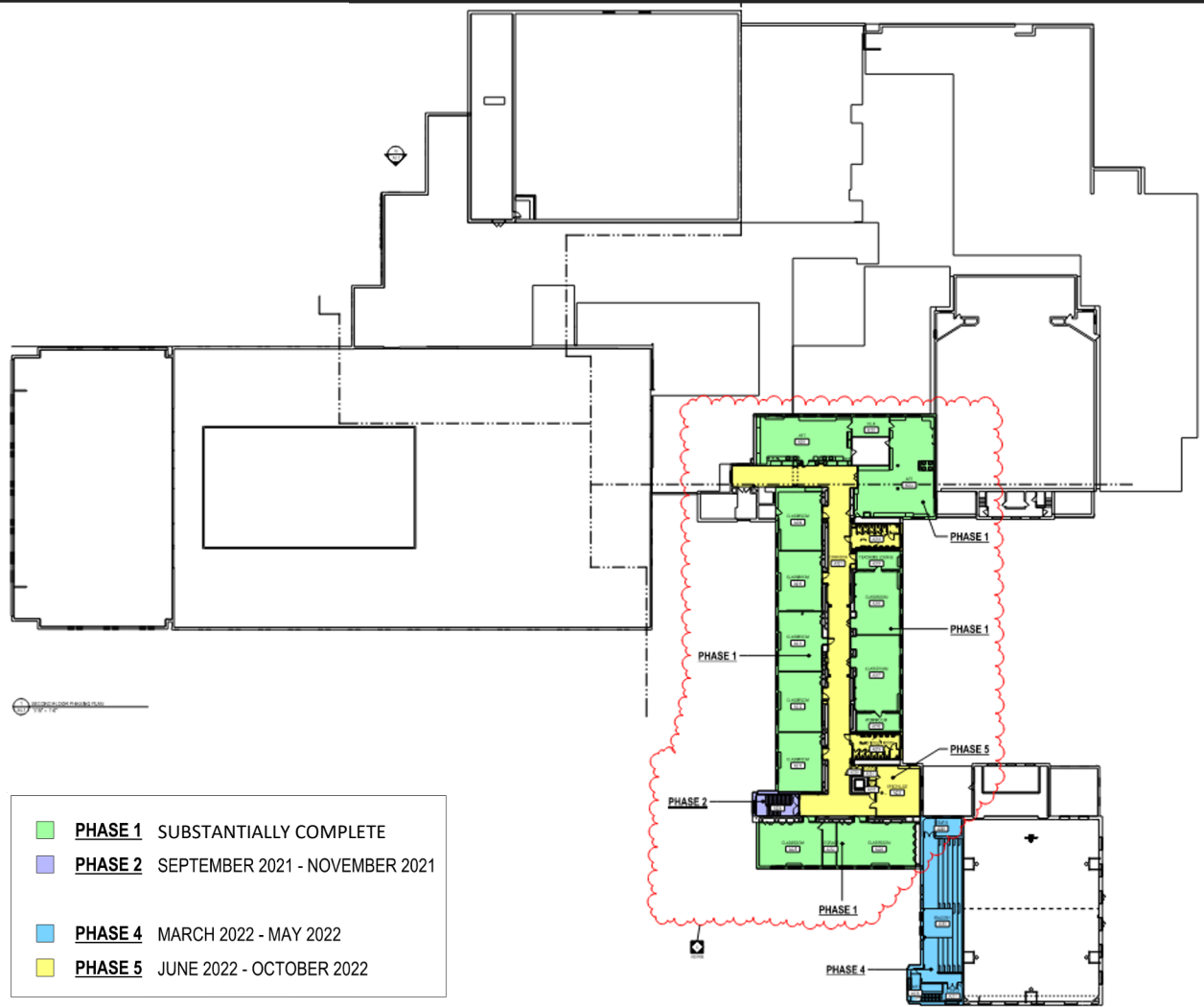
WAHS PHASING PLAN – GROUND FLOOR



WAHS PHASING PLAN – FIRST FLOOR



WAHS PHASING PLAN – SECOND FLOOR



WAHS CONSTRUCTION SCHEDULE

Wyomissing Area Jr/Sr High School

- Sept 2021 – Feb 2022: Classrooms and Transportation Offices
- Mar 2022 – May 2022: Auxiliary Gym
- Summer 2022: Support Spaces (including Cafeteria, Media Center)
- Aug 2022 – Oct 2022 Support Spaces (including Gym/Locker Rooms, DAO Entrances)

WAHS CONSTRUCTION PHOTOS



WAHS CONSTRUCTION PHOTOS



WAHS CONSTRUCTION PHOTOS



WAHS PENDING CHANGE ORDERS

General Construction

- PCO 32 New door/hardware at Women's Locker Room Office \$2,616.86
- PCO 32 Existing floor repair for plumbing fixture installation \$3,508.60

HVAC Construction

- **PCO 12 Area B exhaust fans/grilles/ductwork replacement \$10,277.00**
- PCO 13 Fan coil outside/return air dampers @ Transportation \$4,543.00

Plumbing Construction

- PCO 7 Mixing valves for new lavatories \$13,544.00
- PCO 8 New valves in existing lines due to deterioration \$1,854.00
- PCO 9 Sink connection at Nurse area \$1,013.00

WAHS PENDING CHANGE ORDERS

Electrical Construction

- PCO 22 Lighting Type D credit/Lighting Type D1 add \$5,362.00
- PCO 26 Upgraded power supply at HVAC unit @ Area D \$32,270.00
- PCO 30 Remove exist cabling/provide new conduit/cable \$957.00
- PCO 31 New light fixtures/sensors due to ceiling abatement \$3,612.00
- PCO 33 Two new exit signs in Women's Locker area \$1,175.00
- PCO 34 Modifications for exhaust fan controls \$1,275.00
- PCO 36 Disconnect exist heater/power to new HVAC unit \$535.00



Providing a client oriented
approach to architecture

Questions/Discussions



Crabtree, Rohrbaugh & Associates
www.cra-architects.com